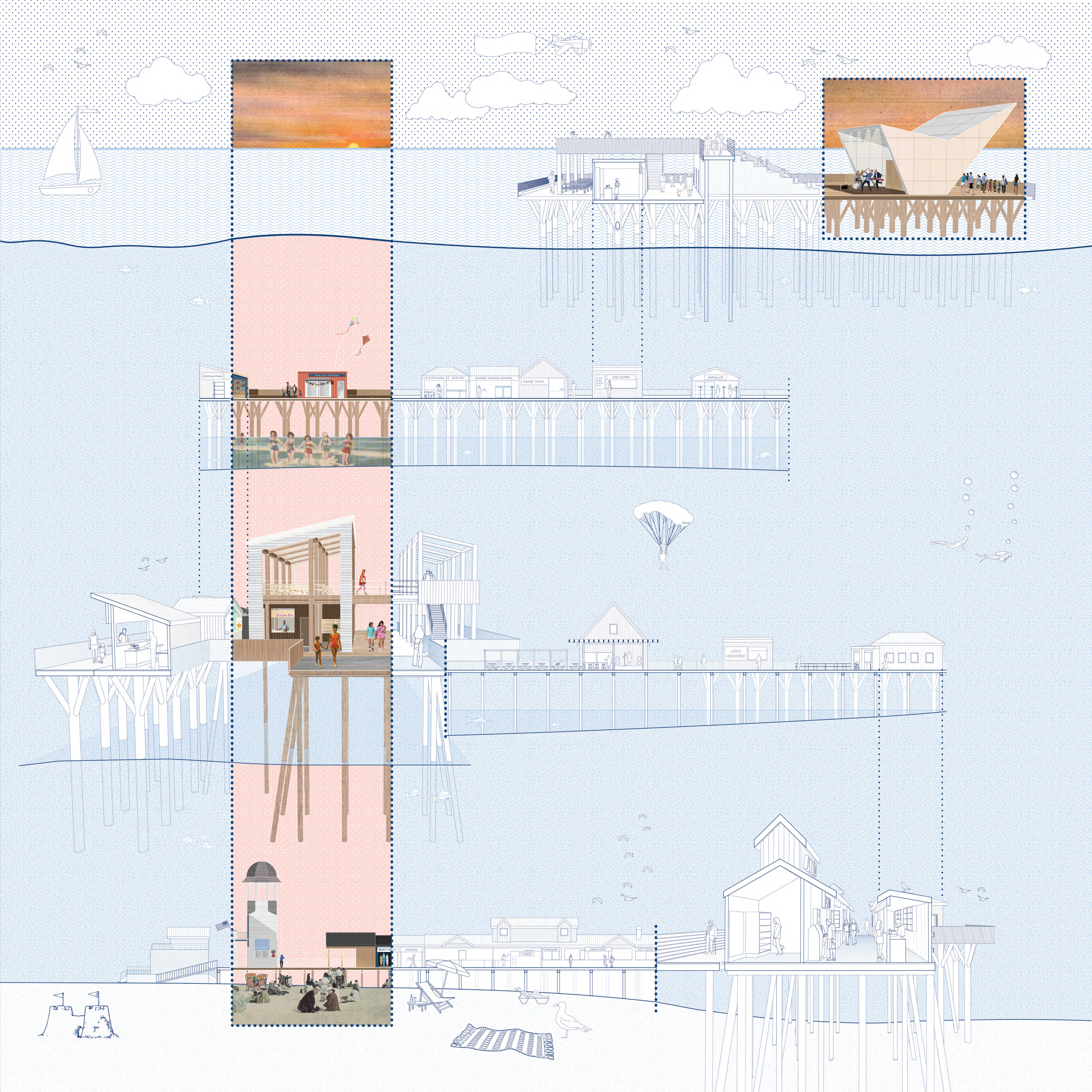
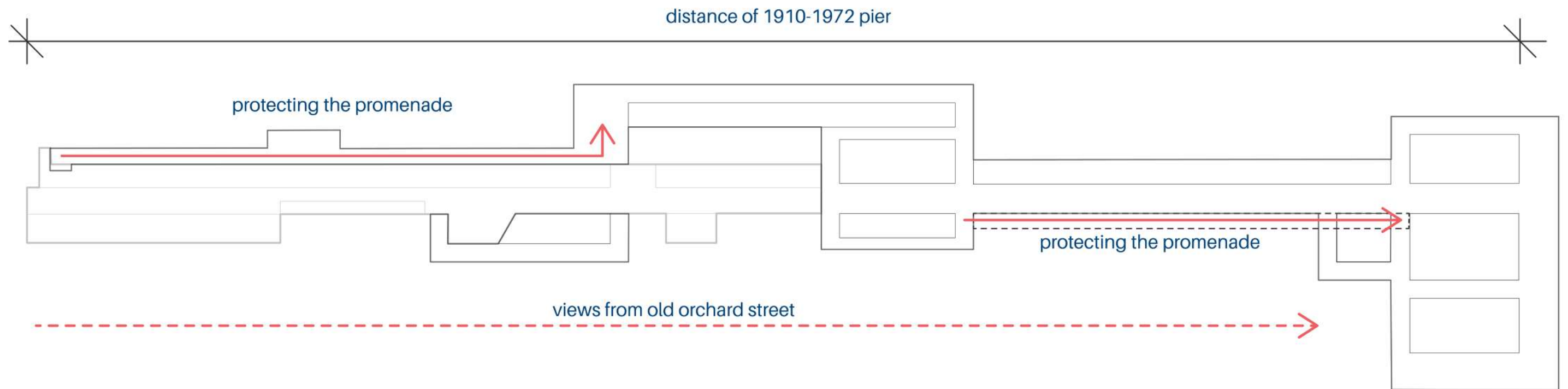
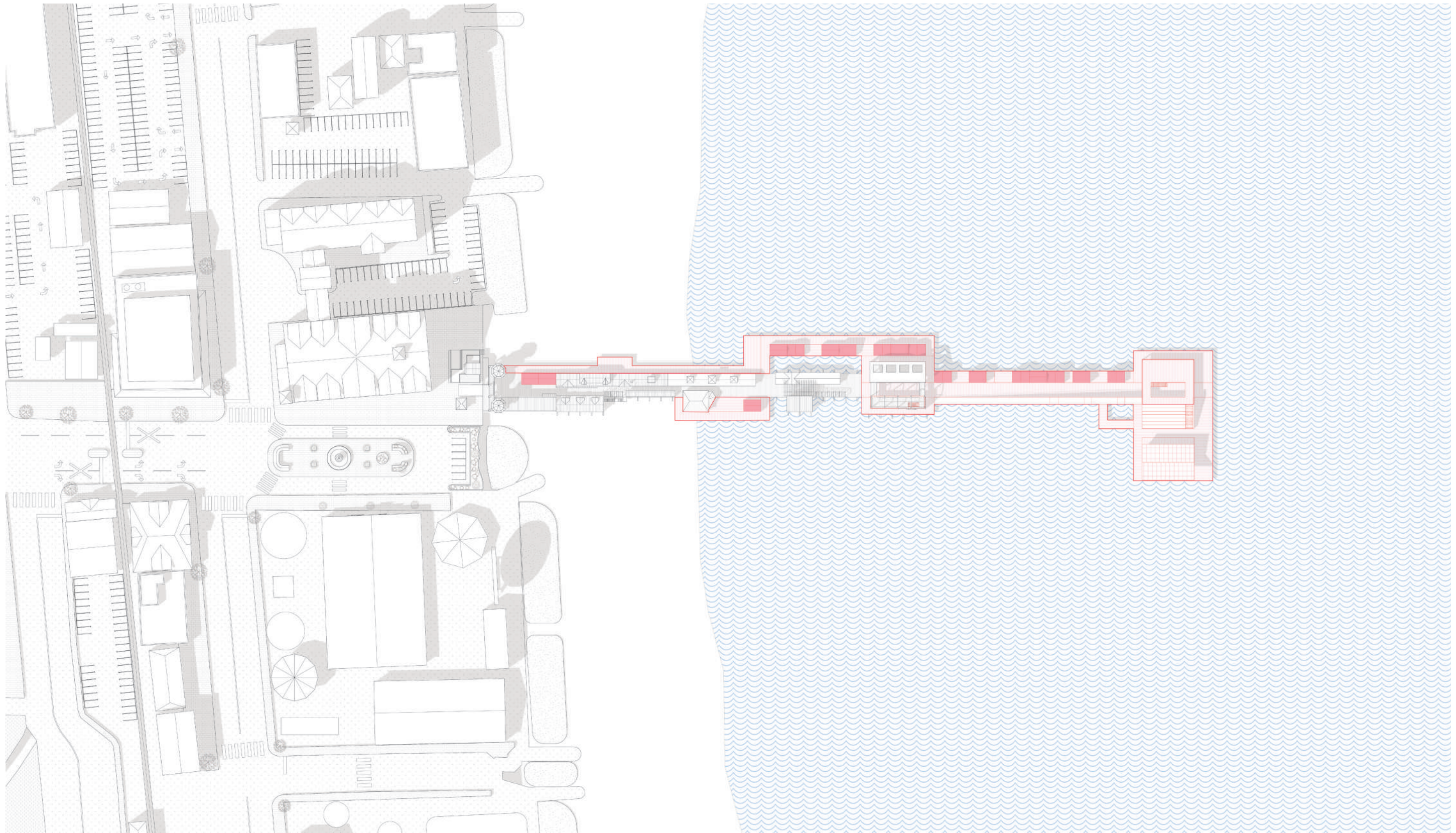


Located in Old Orchard Beach, Maine, the project reimagines the historic pier through a conservation and modular addition strategy. The addition preserves the architectural patchwork that has defined the pier since 1899, reducing the environmental impact associated with new construction by maintaining existing structures and minimizing demolition waste. The design is future-focused, addressing the pier's vulnerability as a coastal structure facing increasingly unpredictable weather due to climate change. The use of adaptable modular components allows for sections to be added or removed as needed, ensuring the pier can evolve with the environment and accommodate growth without overbuilding. The pier provides locals with the agency to expand their business onto the wooden structural modules that will aggregate as needed based on future growth, extending the existing vendor and architectural patchwork. The existing main pavilion has been opened up as a midpoint for resting to eat. The newly designed end-pavilion embraces the past entertainment values of the site showcasing live performances and expansive views out to the water. The form of the performance structure is shifted to align with the main street of the town, inviting visitors to adventure through the entirety of the pier especially during sunset, when sun rays reflect off of the metallic panels. The two storey performance pavilion is accessible with the feature ramp leading tourists on a journey separated from the busy vendor stalls. The total pier addition allows the current architectural and vendor patchwork to be valued as a key component to the pier's long standing success since 1899. This flexibility fosters long-term resilience, allowing the structure to remain functional despite the coastal conditions. By combining heritage conservation, modular adaptability, and wood construction, the project achieves a balance between honouring the past and preparing for the future, making it a leading example of sustainable design excellence.



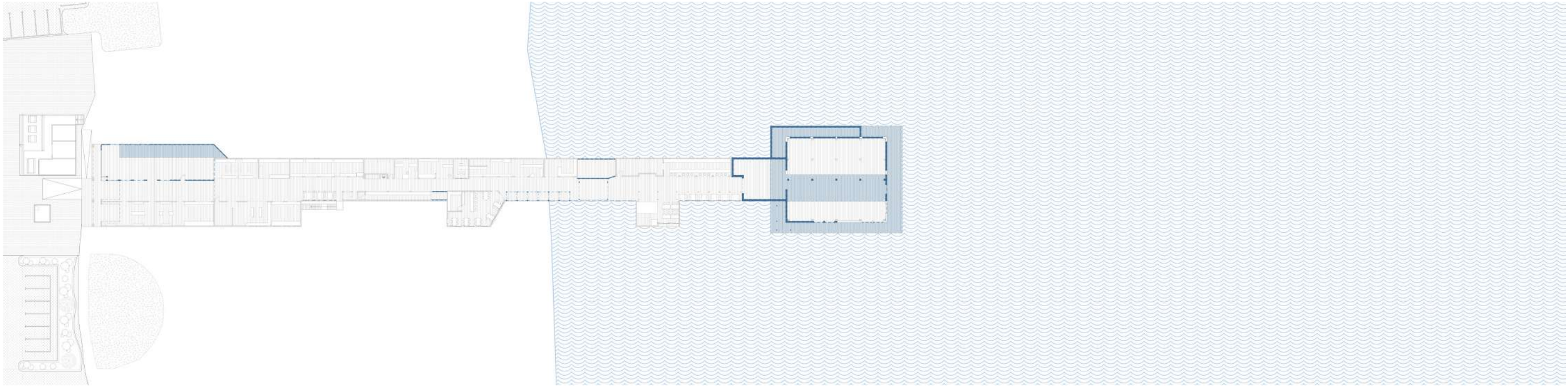




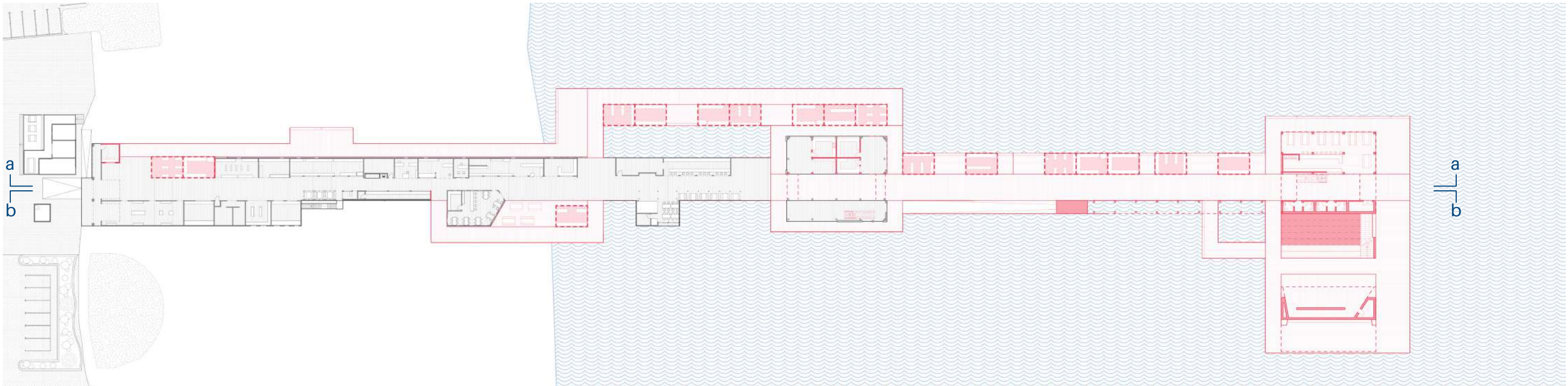


site plan | the pier





demo plan 



a
b

a
b

proposed plan 

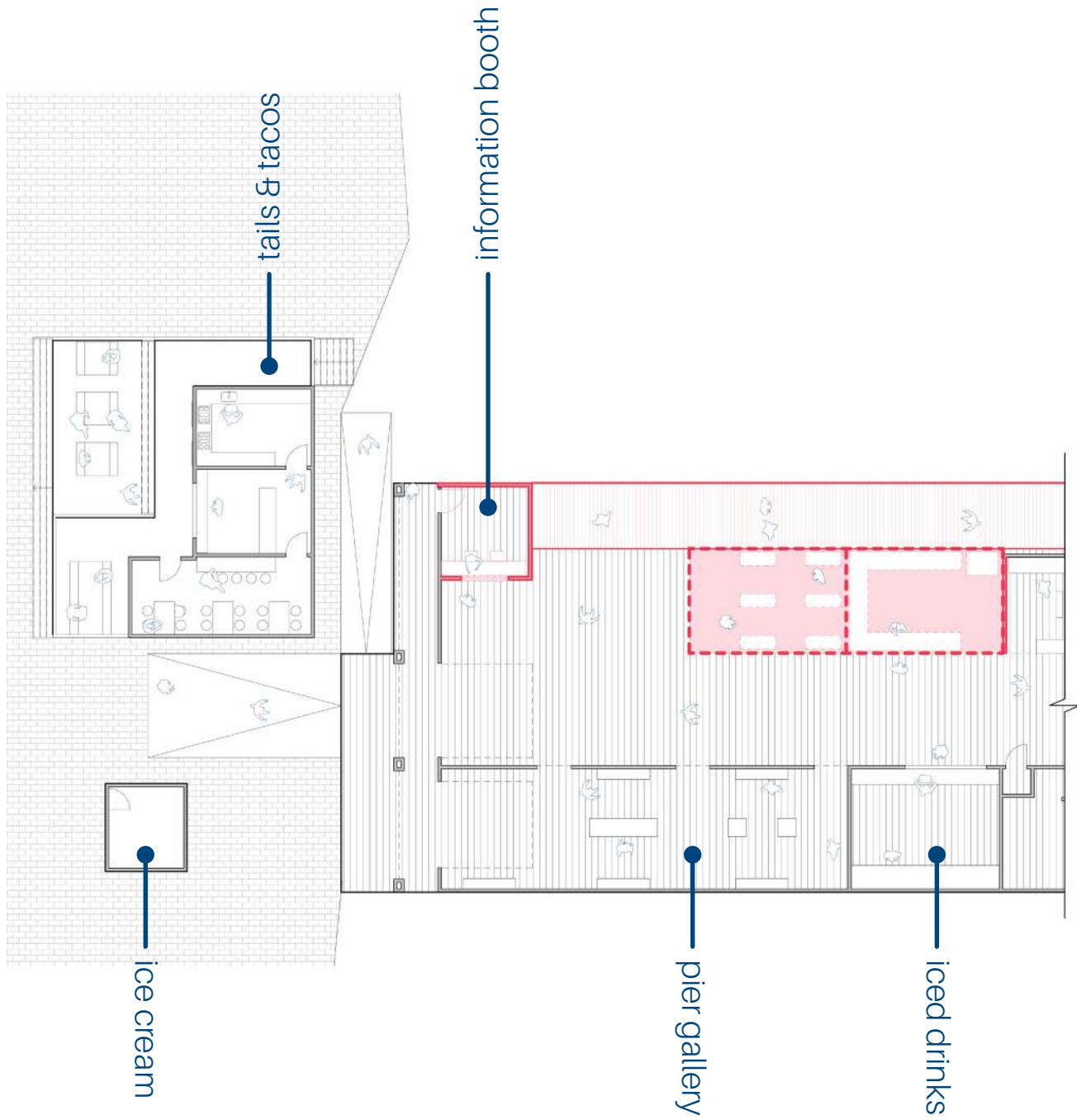


north elevation



south elevation

 potential infill vendor

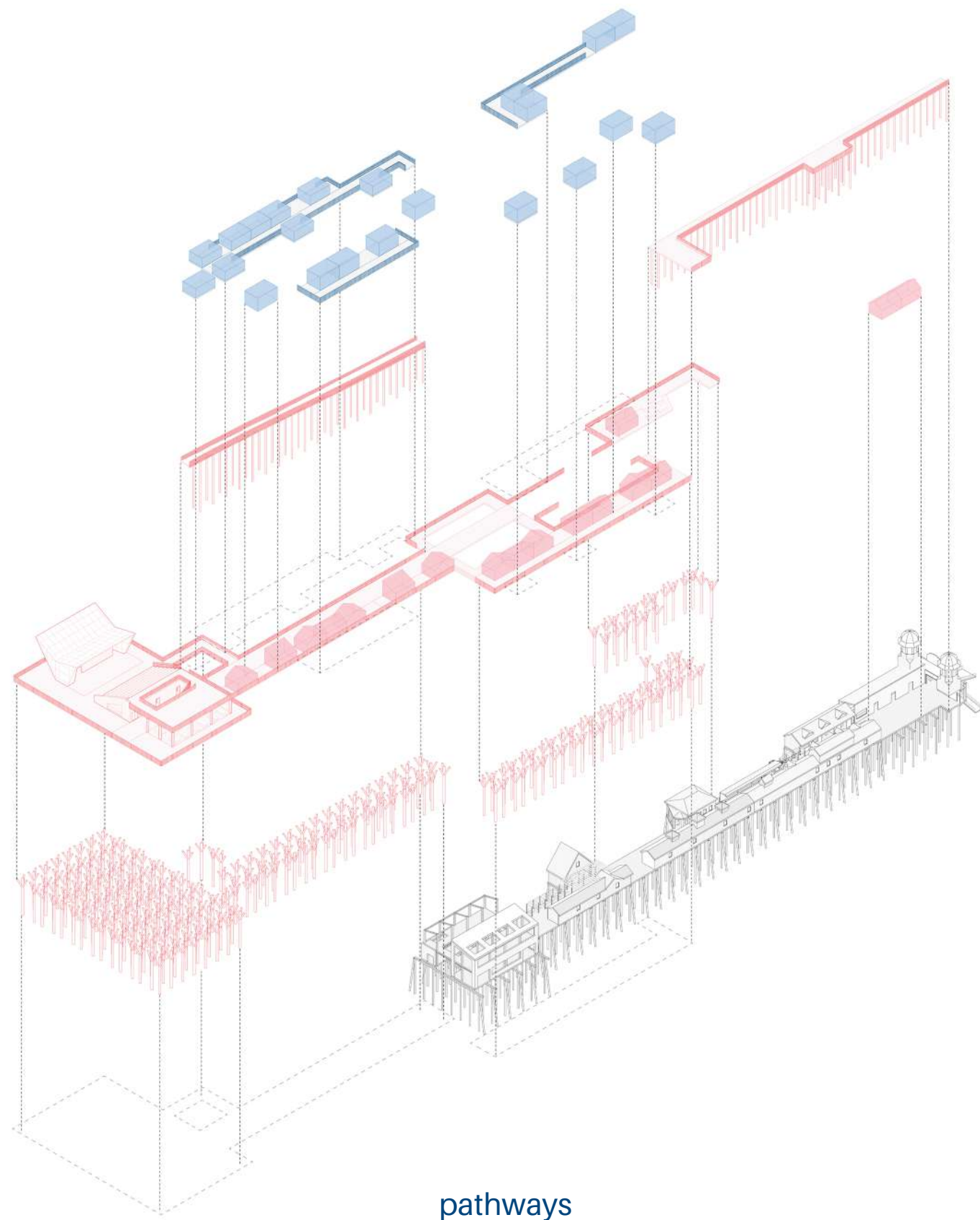


pier entrance



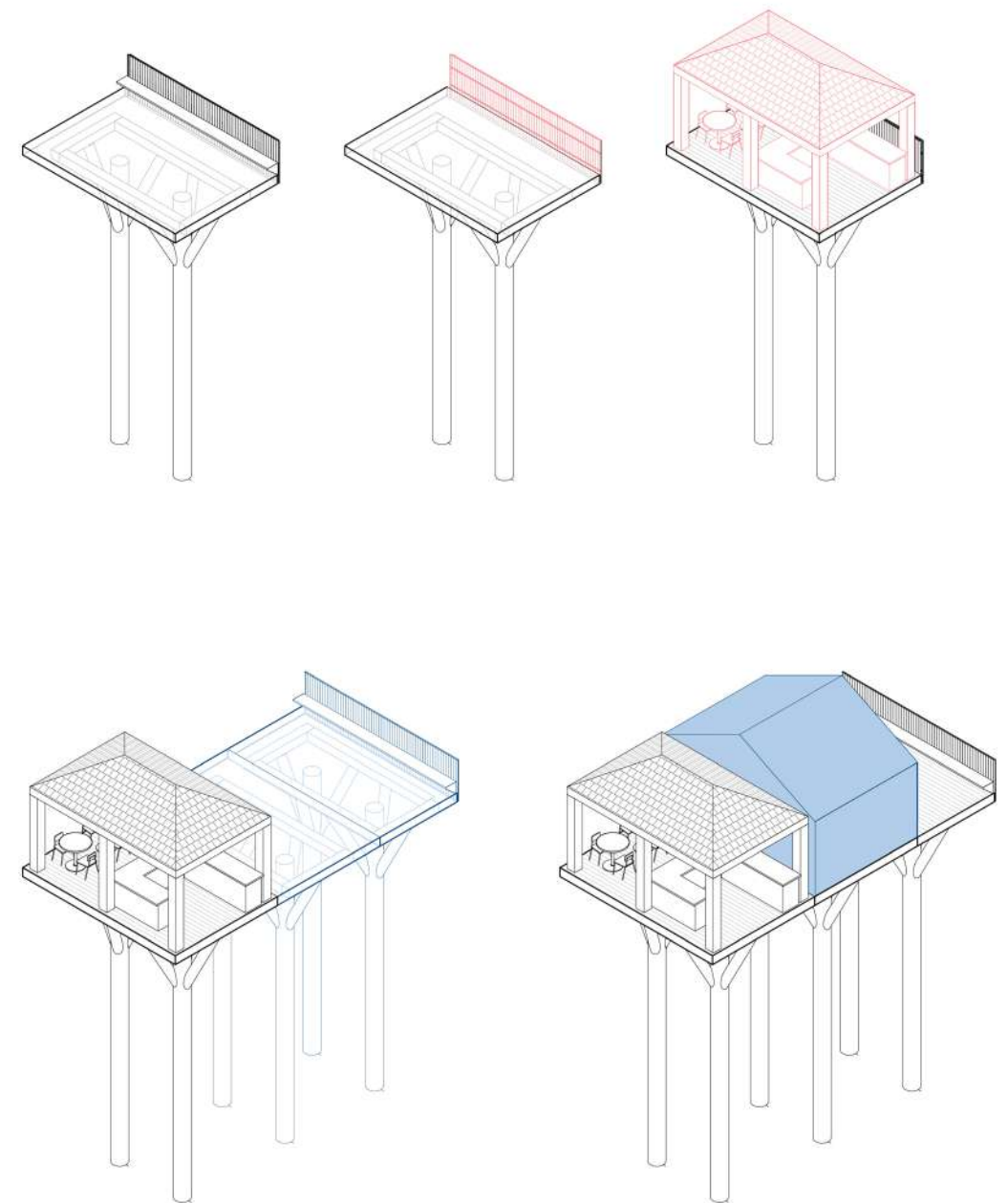


a place to rest



pathways

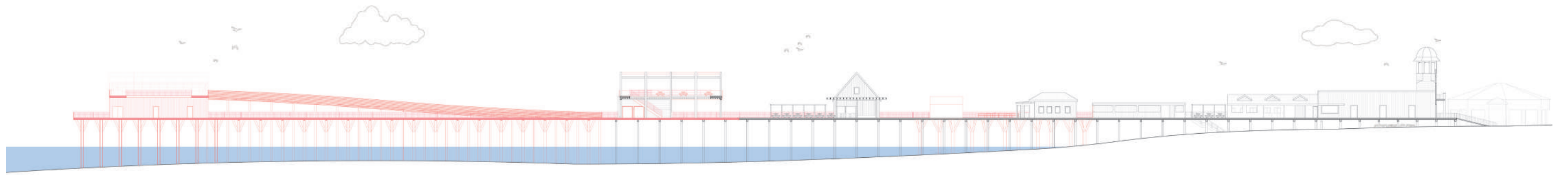
layering the patchwork



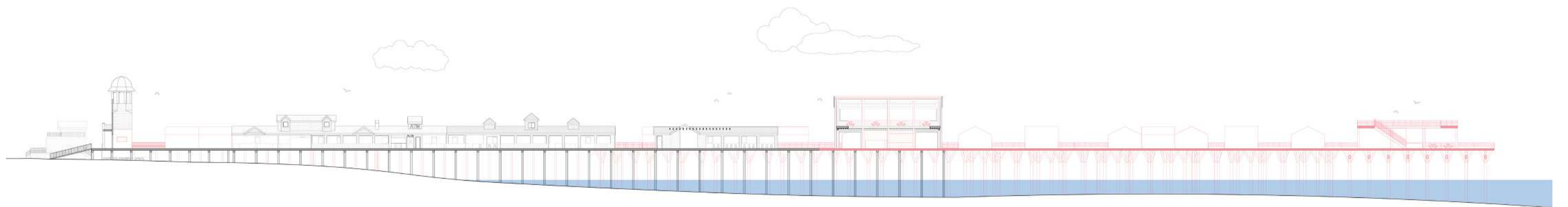
modules



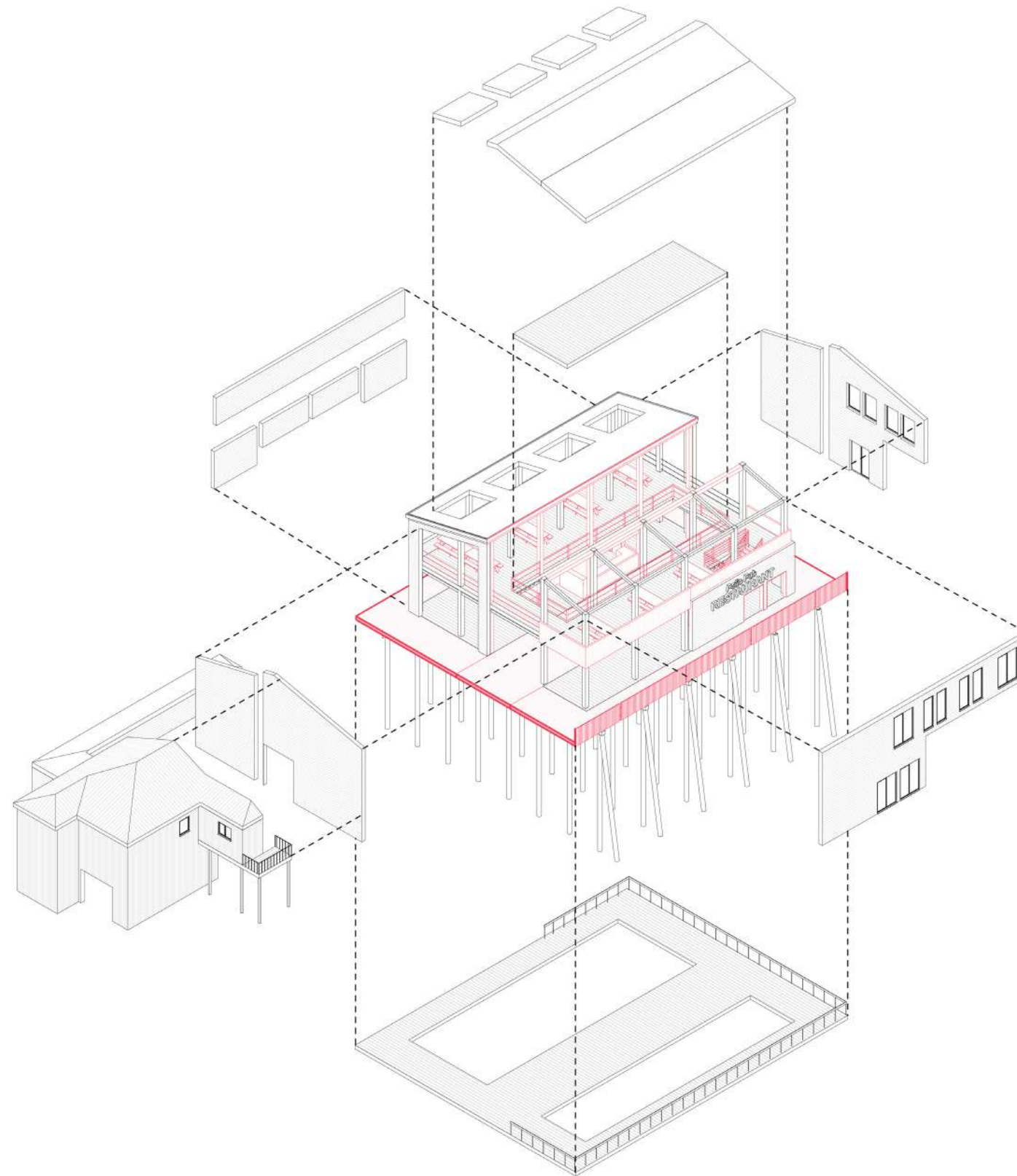
experiencing the patchwork from a distance



section b.b

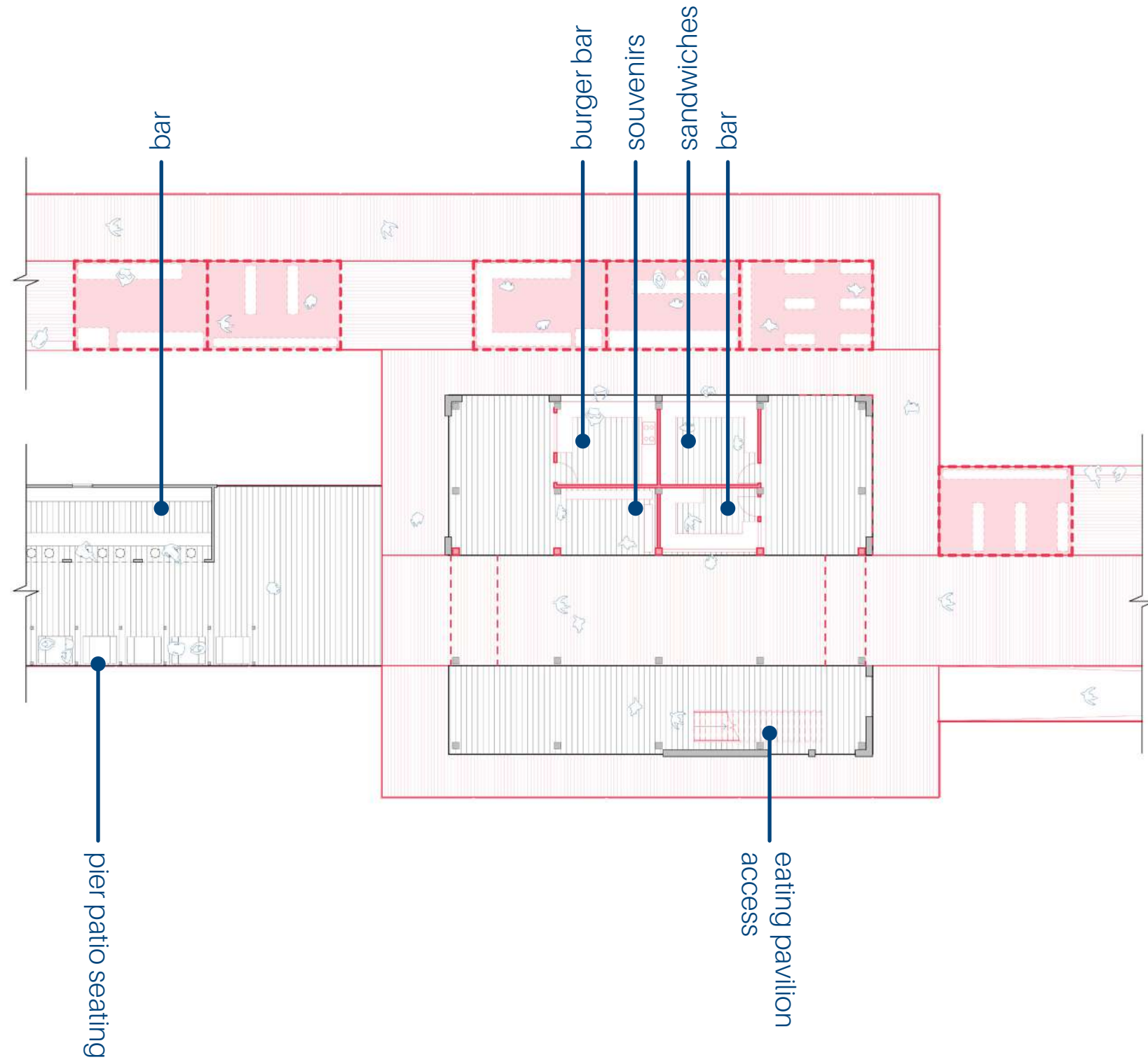


section a.a



pier pavilion | adapting existing pavilion for future entertainment

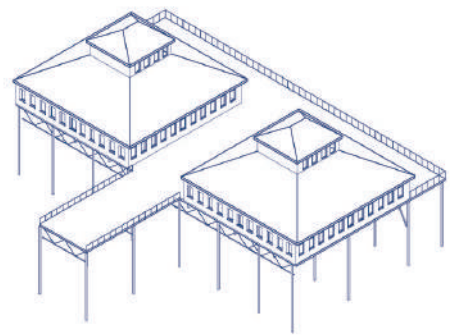
potential infill vendor



middle pavilion

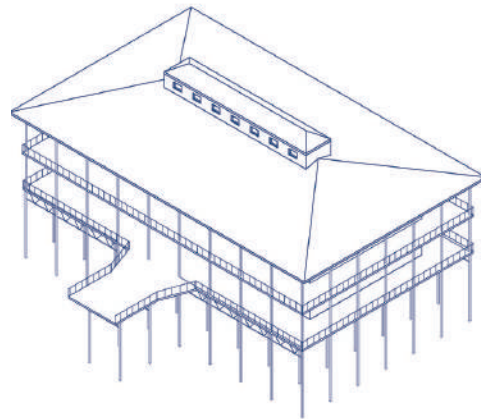


casino
ballroom
live entertainment
dancing
singing



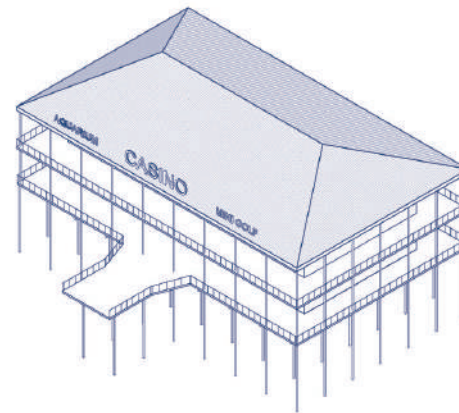
1898

casino
ballroom
live entertainment
east coast bands
dancing



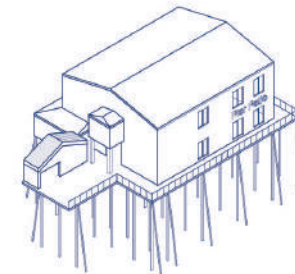
1898 - 1909

casino
ballroom
dancing
movies
5000 guests
live entertainment
frank sinatra
louis armstrong



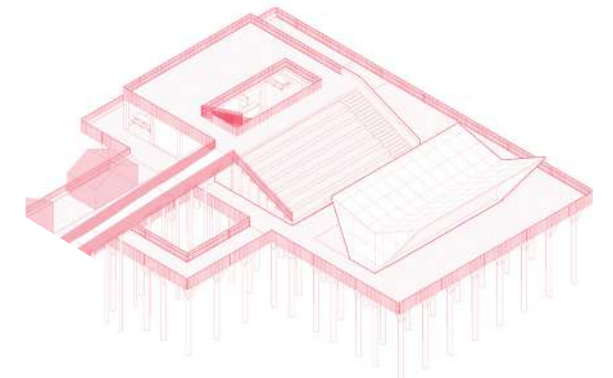
1910 - 1972

night club
restaurant
pub
casino
dj



1980 - present

family friendly
restaurant
viewing deck
entertainment space
lookout zones

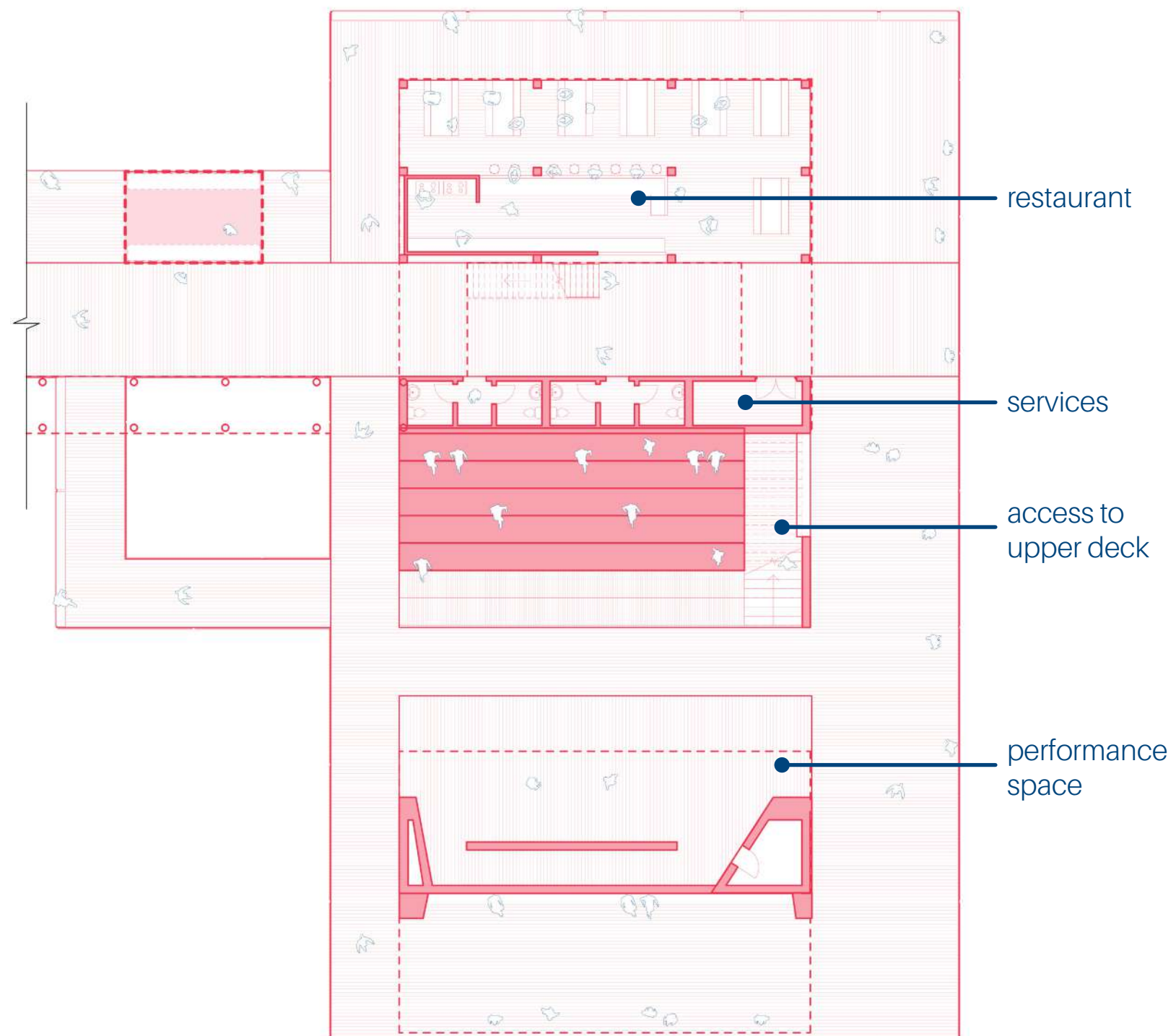


design proposal

pier pavilion | continuing the tradition



potential infill vendor



end pavilion



morning high tide



mid day low tide

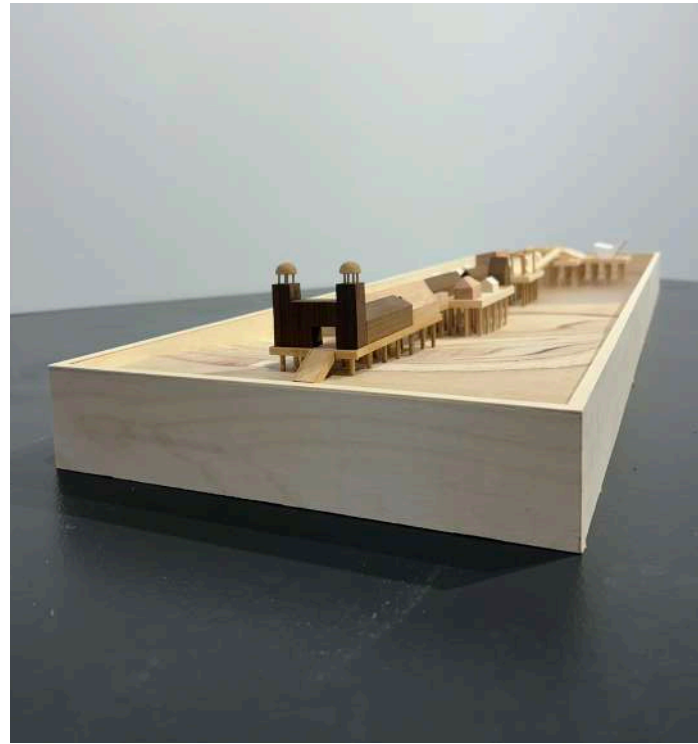
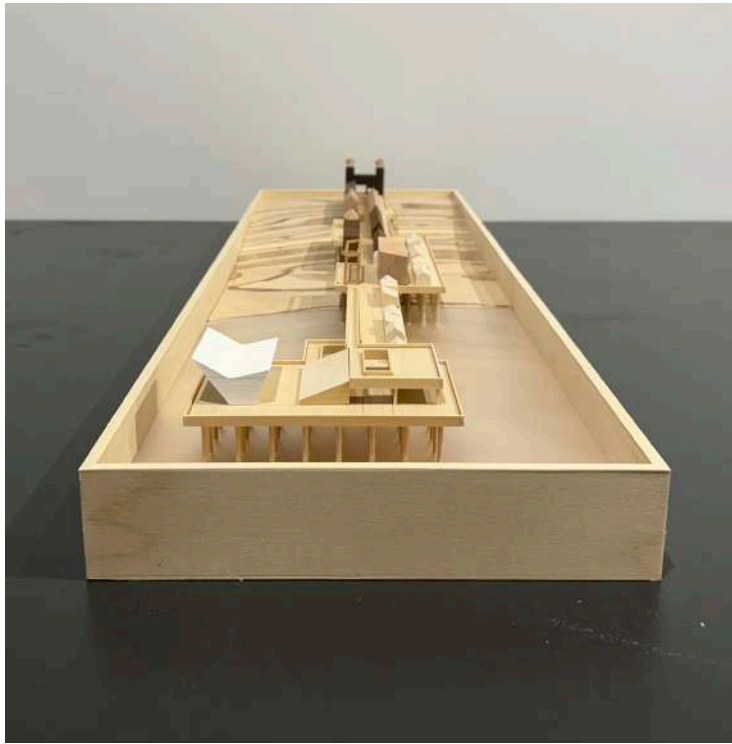


late afternoon mid tide



dusk high tide

designing with the site



model